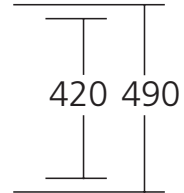
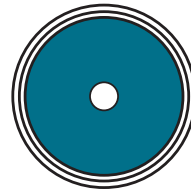


Oliveri®

Model: LR510 NZ



FEATURES

- Low profile edge**
 Provides a smooth transition from sink to bench top for bowl only models.
- Eye-catching design**
 As a stand alone bowl or in combination with another sink or drainer.
- 24 Litre, extra deep bowl**
 Perfect as a butler or laundry sink, the bowl holds most tall buckets or vases when installed with a goose neck tap.
- Custom made accessories**
 Transforms the sink into a streamlined food preparation area.
- Lifetime warranty**
 Oliveri sinks are covered by a lifetime manufactures warranty (visit oliveri.co.nz for details)

INCLUDED ACCESSORIES



AC09
Basket waste

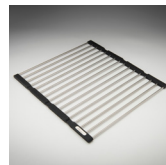
MATCHING ACCESSORIES



AC50
Bamboo board



AC53
Utility tray



ACP105
Foldamate

RECOMMENDED TAPWARE



VT0426C
WELS 4 Star
6.5L per min

VT0398C
WELS 4 Star
6.5L per min

SPECIFICATIONS

Description

Round bowl sink

Sink Size

490W x 490H

Round Bowl

420W x 180D / 24L

Construction

Single piece

Material

304 grade, 18/10 polished stainless steel (0.8mm thick)

Installation

Topmount or Undermount

EAN

9324974011123

Fixings

Adjustable clips and sealing foam supplied

Cut out template

Refer to oliveri.co.nz

Min cabinet size

600mm

Tap holes

N/A

Waste fittings

1 x 90mm basket waste included

Overflow

N/A

Carton size

570 x 570 x 230mm

Weight

4.0 kg

Warranty

Lifetime manufacturer's warranty (refer to oliveri.co.nz)



For more information call **0800 400 606** or visit **oliveri.co.nz**